

Who we are

Our voluntary adoption agency was created in 1946 to help support women and children after WWII. Since then, we have become a registered charity focusing on helping children in the UK, who are Looked After by Local Authorities, find their forever home.



**Yorkshire Adoption
Agency**

What we do

We recruit, train, approve adoptive parents, and support them and their children. Our offer of support is life-long for all our families.

We pride ourselves on being friendly and responsive to anyone who contacts us.

Becoming a Voluntary Panel Member

What is the Adoption Panel?

Yorkshire Adoption Agency has two panels that run every month – Panel A and Panel B. The Adoption Panel considers applications from individuals and couples who are seeking to adopt. At each panel, up to 2 applications are considered. Each Adoption Panel has a Chair who guides the meeting and panel members. Each panel needs at least five panel members in order to be quorate.

Could I be a panel member?

Yorkshire Adoption Agency welcomes expressions of interest from anyone with;

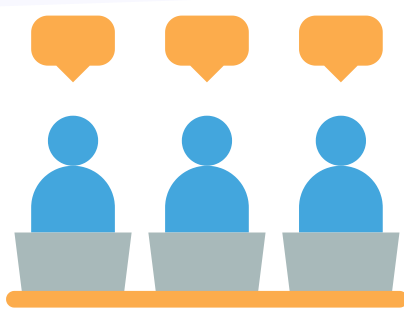
- Personal or professional knowledge of adoption.
- Experience in childcare or education.
- Experience in health care services.
- Experience in Public Services
- Experience as an adoptive parent or Foster Carer

Safeguarding is our top priority in everything we do.

Yorkshire Adoption Agency has a zero tolerance approach to any harm to or exploitation of vulnerable children and adults.

Recruitment to the post of an Adoption Panel member involves Enhanced Disclosure (Criminal records) checks and references.

You will be given induction training and detailed information regarding how the adoption panel operates, prior to sitting as a panel member.



Would you like to learn more?

Please contact Gina Parker, Team Manager at gina@yorkshireadoptionagency.org.uk or call the Agency on 01302 638337

What will be required of me as a panel member?



Yorkshire Adoption
Agency

Adoption Panel's take place on Monday's and run virtually via Zoom video call.

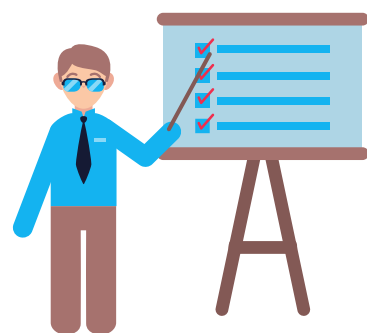
At each panel you sit on as a panel member, you will be required to:

MONDAY

- Attend a meeting at 10.30am to discuss the application(s) and set questions for the assessing social worker and the applicant(s). This usually takes approximately 1 hour.
- Attend two afternoon meetings to hear the application(s). These take place at 12.30pm and 2pm and usually last approximately 1 hour each.
- Prior to each adoption panel you will be receive the paperwork. This will be shared with you 10 days before the panel date to allow you time to carefully read the reports and start to prepare your thoughts.
- Within the panel meeting you will need to be willing and able to share your views in a constructive manner, including providing feedback to those attending panel.



Panel members are required to attend training throughout the year to ensure your skills and knowledge are up to date. Training usually takes place face to face, which creates opportunities for you to develop your relationships with other panel members and Agency staff.



Being a panel member will:

- Allow you to make a difference to future adoptive families
- Supports your Agency
- Meet like minded people
- Enhance your own skills and experience

I can make a difference

Would you like to learn more?

Please contact Gina Parker, Team Manager
at gina@yorkshireadoptionagency.org.uk or
call the Agency on 01302 638337